

## Altura Lithium Operation Newsletter for the month of October 2017

### Altura Pilgangoora Making Great Progress - ASX Announcement

The results of Altura's recent drilling campaign were announced to the ASX on the 24<sup>th</sup> October. The drilling campaign was designed to confirm the forecast tonnes and grade, as well as increase overall knowledge of the orebody. That was achieved, with better than expected results. The resource increased by 10% to 44 million tonnes at 1.0% lithium – Great News for everyone involved in the project. The full announcement can be viewed on Altura's website <http://alturamining.com/>



Photo 1

### Civil Works

Civmec have approximately 30 direct persons on site for concrete works. To date Civmec have poured more than 4360m<sup>3</sup> of structural concrete. The final works for Civmec include surface beds and terrace pads. The finished level of the steel faced reinforced ROM wall has been achieved. Civmec are currently preparing to install the concrete dump slab.



Photo 2

### SMP Construction

Civmec have approximately 30 direct persons on site for SMP works. Construction works have been focused on the Dry Crushing Circuit which includes primary and secondary crushing and primary screening including the assembly of the circuit conveyors. The first of the Civmec fabricated structural steelwork is being erected in the secondary screening building. Civmec's upcoming work fronts include conveyors for the remaining process plant, HPGR and Apron Feeder structural steelwork and the Ball Mill installation (Photo 2 and Photo 3)



Photo 3

## TSF Construction

The NRW crew made significant progress with the Tails Settlement Facility. The embankment is very close to completion with all bulk waste material in place and the clay liner very close to final level. Drains and decant infrastructure are well underway and completion of the project looks to be on schedule for late November, well ahead of processing requirements and importantly ahead of the wet season.



Photo 4

## Mining

Great progress this month on the Run of Mine (ROM) Pad. Despite the need to manage the interaction between ROM Wall construction and ROM pad, the ROM is close to completion and will be finished during November. High grade ore has started to present in the pits and the first stockpile of high grade is now building on the secondary ROM pad.

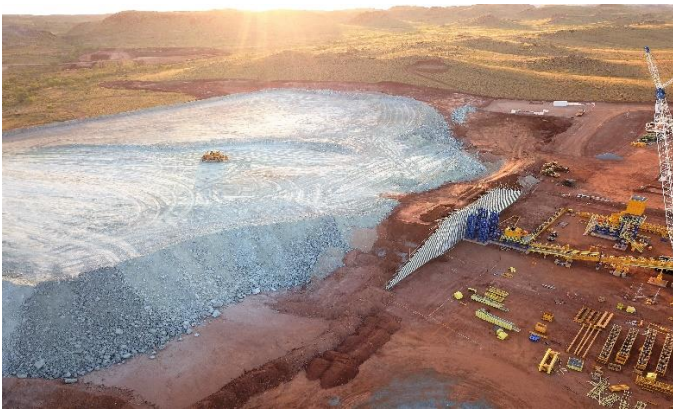


Photo 5

## Non-Process Infrastructure

Installation is ongoing for the Mine Operations Centre offices. Occupancy is planned for November. Mechanical and electrical fit out has commenced for the Power station. The communications tower masts have been installed for both mine site and camp. Cables connecting dish and communications will be connected in the next couple months. Site Waste Water Treatment Plant package has been awarded. Bulk Fuel facility market quotations received..



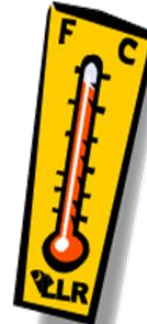
Photo 6

## Safety Theme

### The Danger of Heat Stress

Department of Mines State Mining Engineer Andrew Chaplyn said the extremes of Western Australia's climate means that heat stress is a significant risk that needs to be managed across the State's mining operations.

**PREVENT HEAT STRESS**





“Supervisors and workers need to understand the risks and symptoms of heat stress. Workers should report any signs of heat stress to a supervisor,” Mr Chaplyn said.

“Heat stroke can cause permanent damage to the brain and other vital organs, and can even result in death.

“It is critical that urgent medical treatment is sought for anyone suspected of suffering heat-related illness.”

Key Risk Factors	Minimising the Potential
Lack of acclimatization	Sufficient Water Consumption
Low level of physical fitness	Heat Acclimatisation
Medical conditions (diabetes, cardiovascular disease, gastroenteritis)	Good Physical Condition
Some medications	Appropriate Clothing
Drug and alcohol use	Scheduling of Physical Activity
Dehydration	
Age (especially workers older than 60)	



Photo 7

Altura Emergency Response Team Members have a varying level of Training / Qualification and Experience. The members are shown in the table below. New members are **ALWAYS** welcome, please contact the Medic/ESO for application forms.

### Emergency Response Team (ERT)

The ERT are now using a simulation mannequin to enhance to the quality of its training. The mannequin features CPR, airway, lungs, intravenous access, intramuscular access and moveable joints. This training aid allows Altura ERT members to undertake more realistic training and to create scenarios where the risk of injury to a human simulating the casualty would be too high. An example of such training is shown in Photo 7..

ERT responded to a mock emergency where a dump truck tyre had fallen, crushing a tyre fitter. The mannequin also enables quality CPR for site-based first-aid training, delivered by Falck paramedics.

Team Member	Company
Arron Thornley	NRW
Tom Murphy	NRW
Mark Chilcott	NRW
Luis Pena	CIVMEC
Mia Morris	CIVMEC
Rebecca Turbitt	Altura
Tom Westerhuis	Altura
Bruce Hudson	Altura
Ian Monk	Altura
Fernando Otalora	Altura

In the last six months, the team have covered emergency topics such as; first-aid, ambulance and clinic familiarisation, road accident rescue, working at heights, vertical rescue and basic firefighting. The planned addition of a dedicated ERT training facility at the Pilgangoora site will enhance the quality of training by allowing for more complex and realistic scenarios.

## Our Pilgangoora People

### Brad Stewart (Altura Site Paramedic)

Altura (Falck) paramedic Brad Stewart recently returned from Bangladesh where he lead a team providing assistance to the displaced Rohingya refugees of Rakhine state, Myanmar. Brad is the Operations Manager for the health charity Backpacker Medics who provide health care in remote, developing and disaster locations around the world. When violence broke out in Rakhine State on August 25<sup>th</sup>, resulting in a massive influx of Rohingya refugees into Bangladesh, Brad mobilised a self-funded team of Backpacker Medics volunteers to travel to the affected area and provide care. The situation was intense with huge numbers of women and children carrying horrific injuries such as gunshot wounds, machete injuries along with the extremely sick and malnourished babies they were carrying. The operation is on-going and a second team is hard at work in Bangladesh at the time of writing (see Photo 6). If anyone wants to help, please visit: <https://goo.gl/CjHCWY>



Photo 8

### Civmec Recognition for Excellence

During October the following Civmec employees were recognized for the outstanding contribution with various initiatives and efforts:

**Frank Jackman, Sean McMacken, Michael Fowles, Todd Guelpa and Josh Friesen.**

Thanks guys, well done and keep up the great work.



Also at Civmec a morning BBQ Gold Coin donation was held in aid of the Cancer Council. This was in memory of a Civmec Employee, Tara Gerring, who recently lost her battle with Cancer. \$550 was raised.

### NRW Safety Award Nomination

The NRW Mining business awards a prize of \$5000 for a charitable donation to the Project with the best safety performance for the quarter. Whilst not formally announced at the time of writing, there is quiet confidence that the NRW team on our project will be the winners of this award for the last quarter. Great effort guys.

### New Altura People on the Project

Graham Austen Plant Maintenance Superintendent  
Brady Jenkins: Processing Superintendent  
Luke Streat: Camp Maintenance  
Sharon Wielders: HSE Advisor